



Maritex - Rental

UTLEIE AV LEKTER OG MASKINER

SPLITT 1 – 150m3



Informasjon:

- | | |
|----------------|------------------------------|
| ○ Havn: | Stavanger, Norge |
| ○ Type: | Splittlekter |
| ○ Dimensjoner: | L:32,0 B:6,5 Dybde:2,4 meter |
| ○ Oppdrift: | 200 tonn |

Utstyr:

- | | |
|---------------|----------|
| ○ Hydraulikk: | Lavtrykk |
|---------------|----------|

Kontaktinformasjon:

Maritex-Rental AS
Brautvegen 493
4343 Orre
Rogaland, Norge

Kontaktperson utleie:

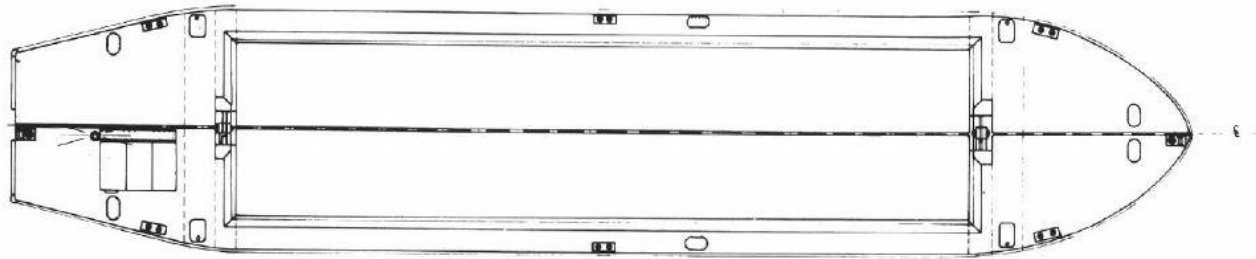
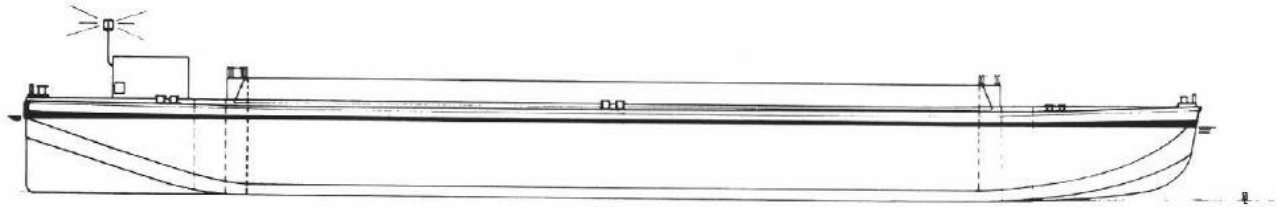
Arnstein Johnsen
TLF: +47 911 85 444
aj@maritex-group.no
www.maritex-group.no



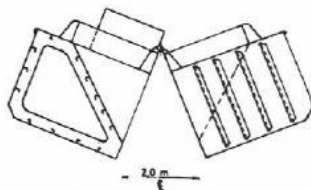
Maritex - Rental

UTLEIE AV LEKTER OG MASKINER

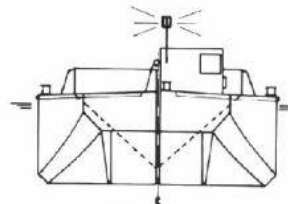
GA



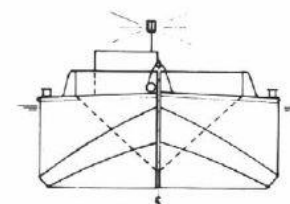
0m 1m 2m 3m 4m 5m



IN OPEN POSITION



STERN VIEW



FRONT VIEW

150 M³ SELMER BARGE MK II

Main dimensions:

Length o.a.	32,00 m
Breadth mld.	6,50 m
Depth mld.	2,40 m
Draught loaded abt.	2,15 m
Length of hopper	20,00 m
Breadth of hopper	4,65 m

Kontaktinformasjon:

Maritex-Rental AS
Brautvegen 493
4343 Orre
Rogaland, Norge

Kontaktperson utleie:

Arnstein Johnsen
TLF: +47 911 85 444
aj@maritex-group.no
www.maritex-group.no